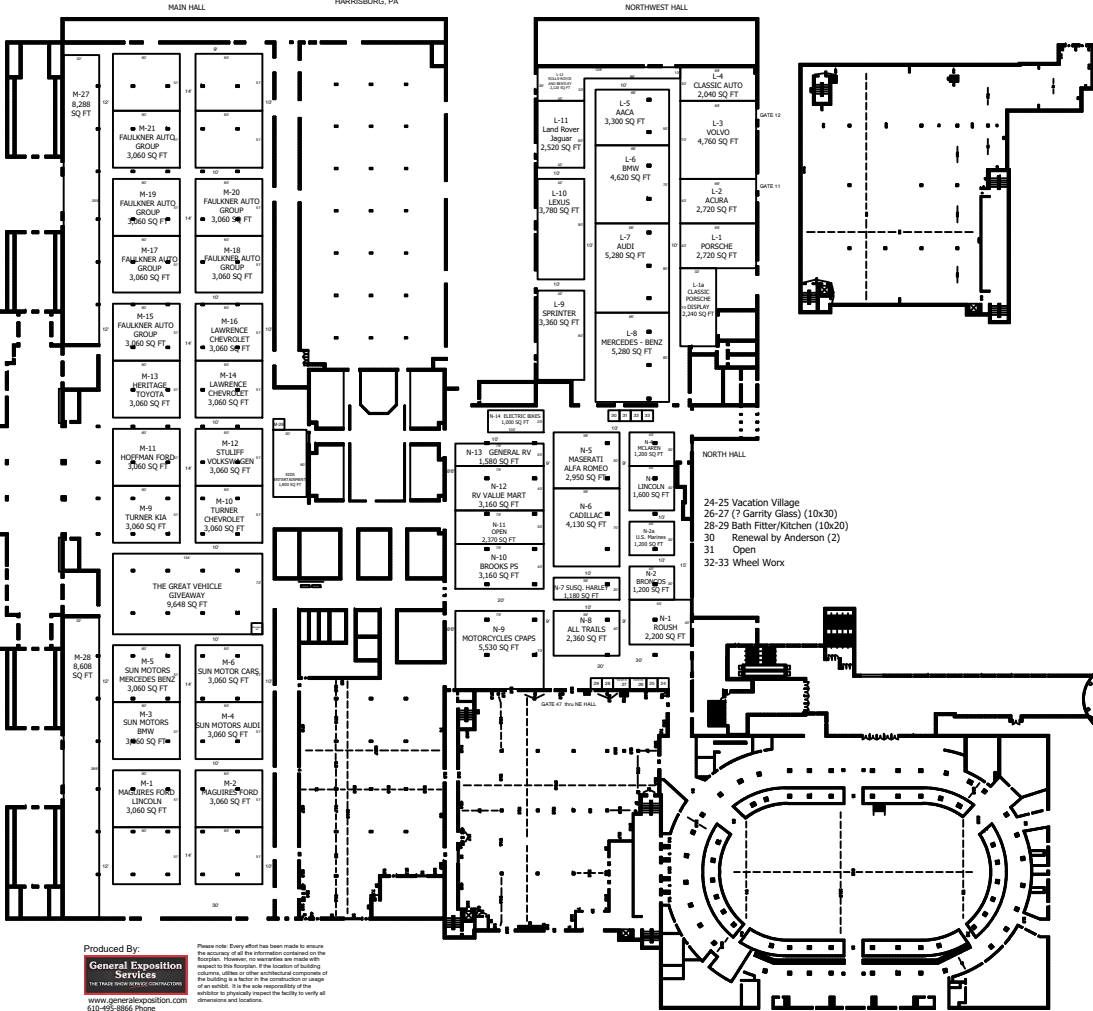
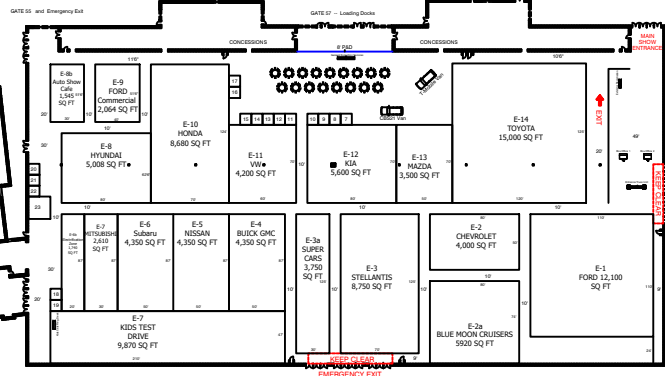


PA AUTO SHOW 2025  
 MAIN (NORTH/NORTHWEST HALLS)  
 FARM SHOW COMPLEX  
 HARRISBURG, PA



- |                |                   |                                   |
|----------------|-------------------|-----------------------------------|
| 1-3 T-Mobile   | 11 58 Foundations | 17 Beat the Bar                   |
| 4-6 CBS 21     | 12 Open (10x10)   | 18-19 Sundance Vacations (10x20)  |
| 7 Open (10x10) | 13 Open (10x10)   | 20-21 Chocolate Moonshine (10x20) |
| 8 Open (10x10) | 14 Refreshed      | 22 Renewal by Anderson            |
| 9 Total Air    | 15 NRG            | 23 Members 1st (20x20)            |
| 10 Leaf Filter | 16 Beat the Bar   |                                   |



Produced By:  
**General Exposition Services**  
 THE TRADE SHOW SERVICES CONTRACTORS  
 www.genalexposition.com  
 610-495-8866 Phone  
 111224 C. McKeenrick

Please note: Every effort has been made to ensure the accuracy of all the information contained on this floor plan. However, no warranties are made with respect to this floor plan. If the location of building columns, walls or other architectural components of the building is shown in the construction or other drawings, it is the site responsibility of the architect to physically measure the facility to verify all dimensions and locations.

EMERGENCY EXIT  
 PA AUTO SHOW 2025  
 EXPO HALL  
 PA FARM SHOW COMPLEX  
 HARRISBURG, PA

Produced By:  
**General Exposition Services**  
 THE TRADE SHOW SERVICES CONTRACTORS  
 www.genalexposition.com  
 610-495-8866 Phone  
 111224 C. McKeenrick

1-3 T-Mobile  
 4-6 CBS 21  
 7 Open (10x10)  
 8 Open (10x10)  
 9 Total Air  
 10 Leaf Filter

11 58 Foundations  
 12 Open (10x10)  
 13 Open (10x10)  
 14 Refreshed  
 15 NRG  
 16 Beat the Bar

17  
 18-19  
 20-21  
 22  
 23

Beat the Bar  
 Sundance Vacations (10x20)  
 Chocolate Moonshine (10x20)  
 Renewal by Anderson  
 Members 1st (20x20)

GATE 55 and Emergency Exit

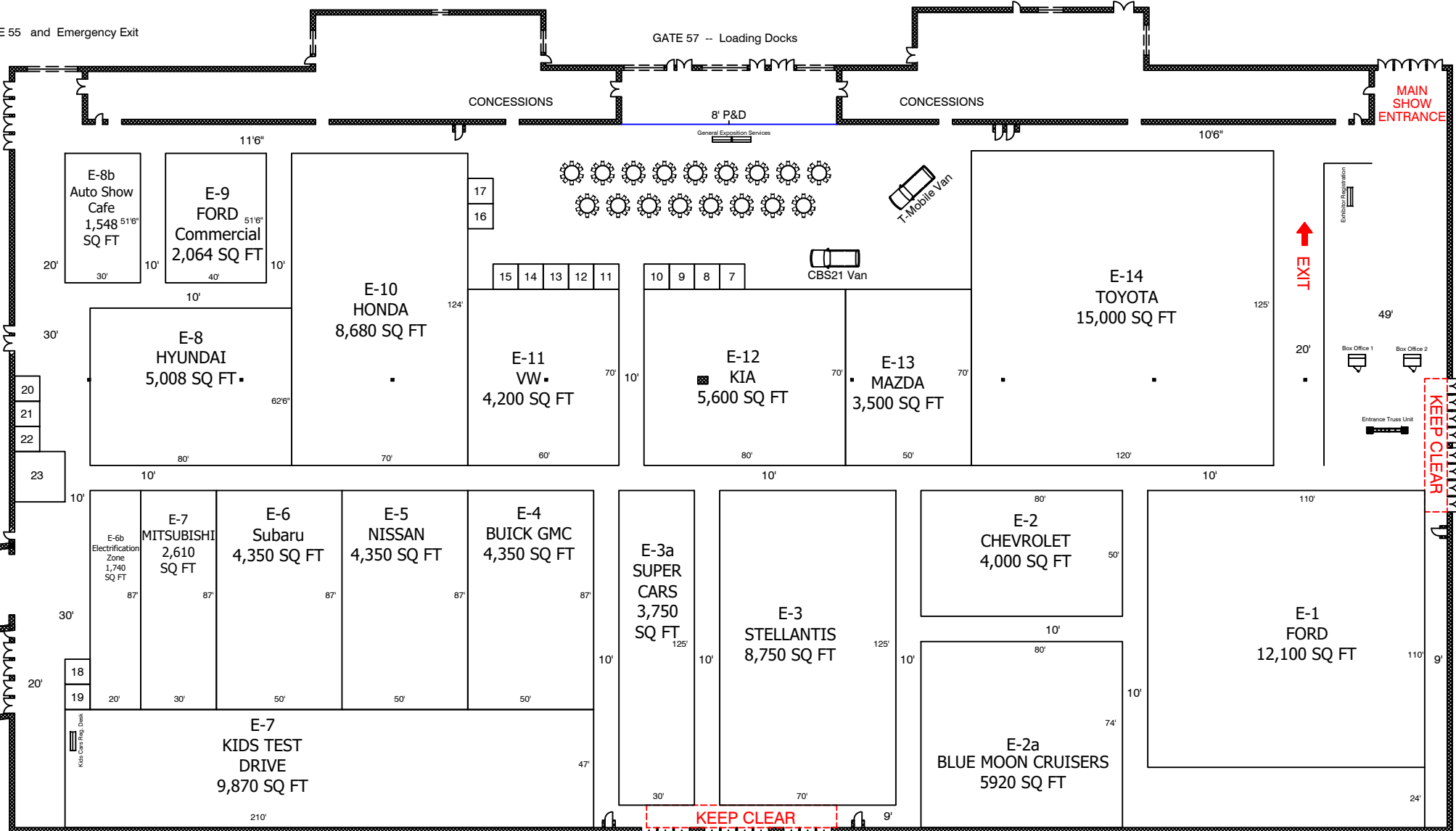
GATE 57 -- Loading Docks

CONCESSIONS

CONCESSIONS

MAIN SHOW ENTRANCE

8' P&D  
 General Exposition Services



PA AUTO SHOW 2025  
 EXPO HALL  
 PA FARM SHOW COMPLEX  
 HARRISBURG, PA

Produced By:



www.generalexposition.com

610-495-8866 Phone  
 11.12.24 C. McKenrick

Please note: Every effort has been made to ensure the accuracy of all the information contained on the floorplan. However, no warranties are made with respect to this floorplan. If the location of building columns, utilities or other architectural components of the building is a factor in the construction or usage of an exhibit. It is the sole responsibility of the exhibitor to physically inspect the facility to verify all dimensions and locations.

N-14 ELECTRIC BIKES  
2,000 SQ FT 20'  
100'

30 31 32 33  
10'

10'  
79' 20'  
N-13 GENERAL RV  
1,580 SQ FT  
8'6"  
79' 40'  
N-12  
RV VALUE MART  
3,160 SQ FT  
79' 30'  
N-11  
OPEN  
2,370 SQ FT  
79' 40'  
N-10  
BROOKS PS  
3,160 SQ FT  
20'

59' 50'  
N-5  
MASERATI  
ALFA ROMEO  
2,950 SQ FT  
9'  
59' 70'  
N-6  
CADILLAC  
4,130 SQ FT  
10' 20'  
N-7 SUSQ. HARLEY  
1,180 SQ FT  
10' 40'  
N-8  
ALL TRAILS  
2,360 SQ FT  
9'

40' 30'  
N-4  
MCLAREN  
1,200 SQ FT  
40' 40'  
N-3  
LINCOLN  
1,600 SQ FT  
10'  
40' 30'  
N-2a  
U.S. Marines  
1,200 SQ FT  
10'

40' 30'  
N-2  
BRONCOS  
1,200 SQ FT  
15'

55' 40'  
N-1  
ROUSH  
2,200 SQ FT  
30'

NORTH HALL

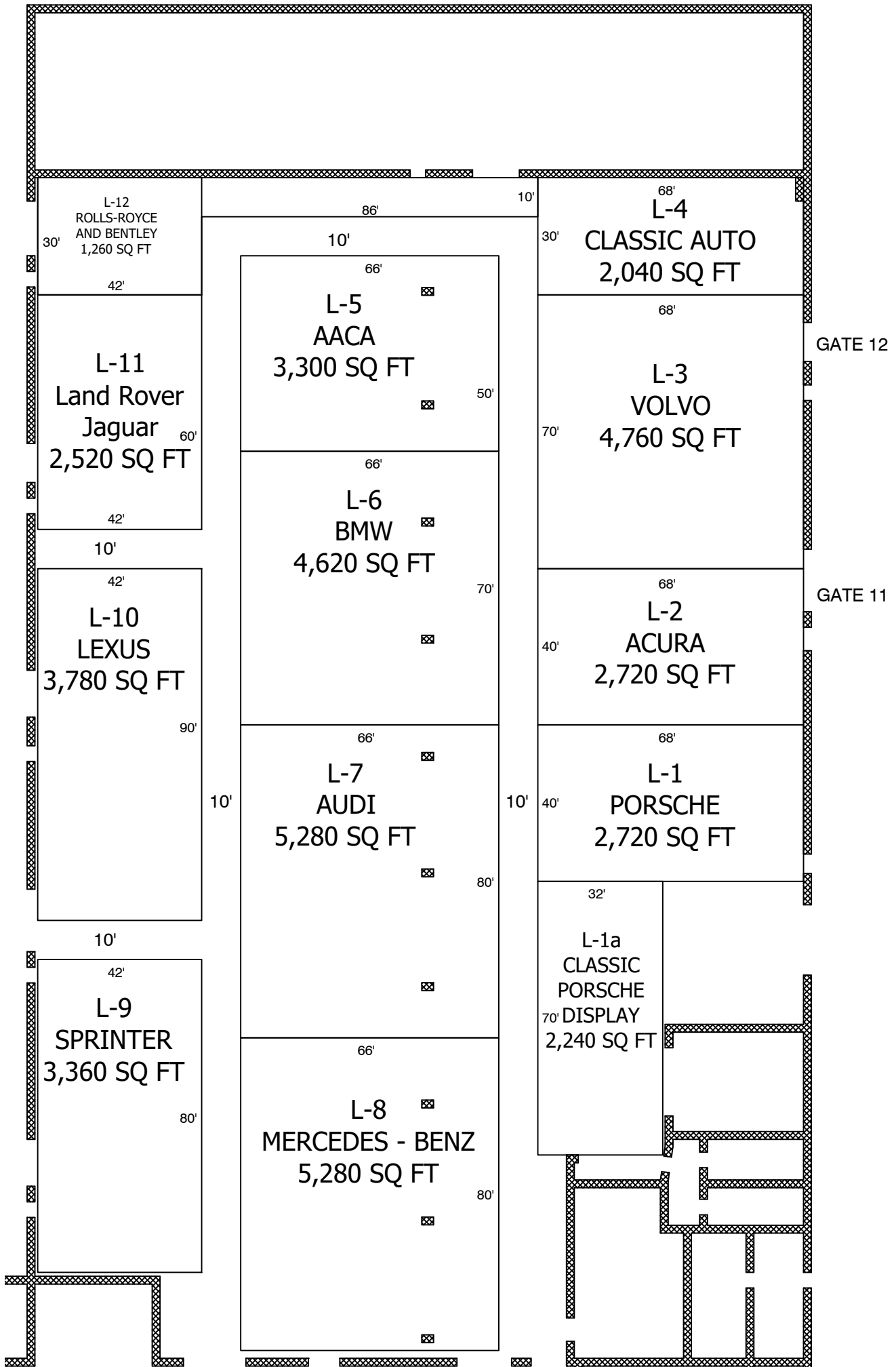
- 24-25 Vacation Village (10x20)
- 26-27 (? Garrity Glass) (10x30)
- 28-29 Bath Fitter/Kitchen (10x20)
- 30 Renewal by Anderson (2)
- 31 Open
- 32-33 Wheel Worx (10x20)

8'6"  
79' 70'  
N-9  
MOTORCYCLES CPAPS  
5,530 SQ FT  
10.5'

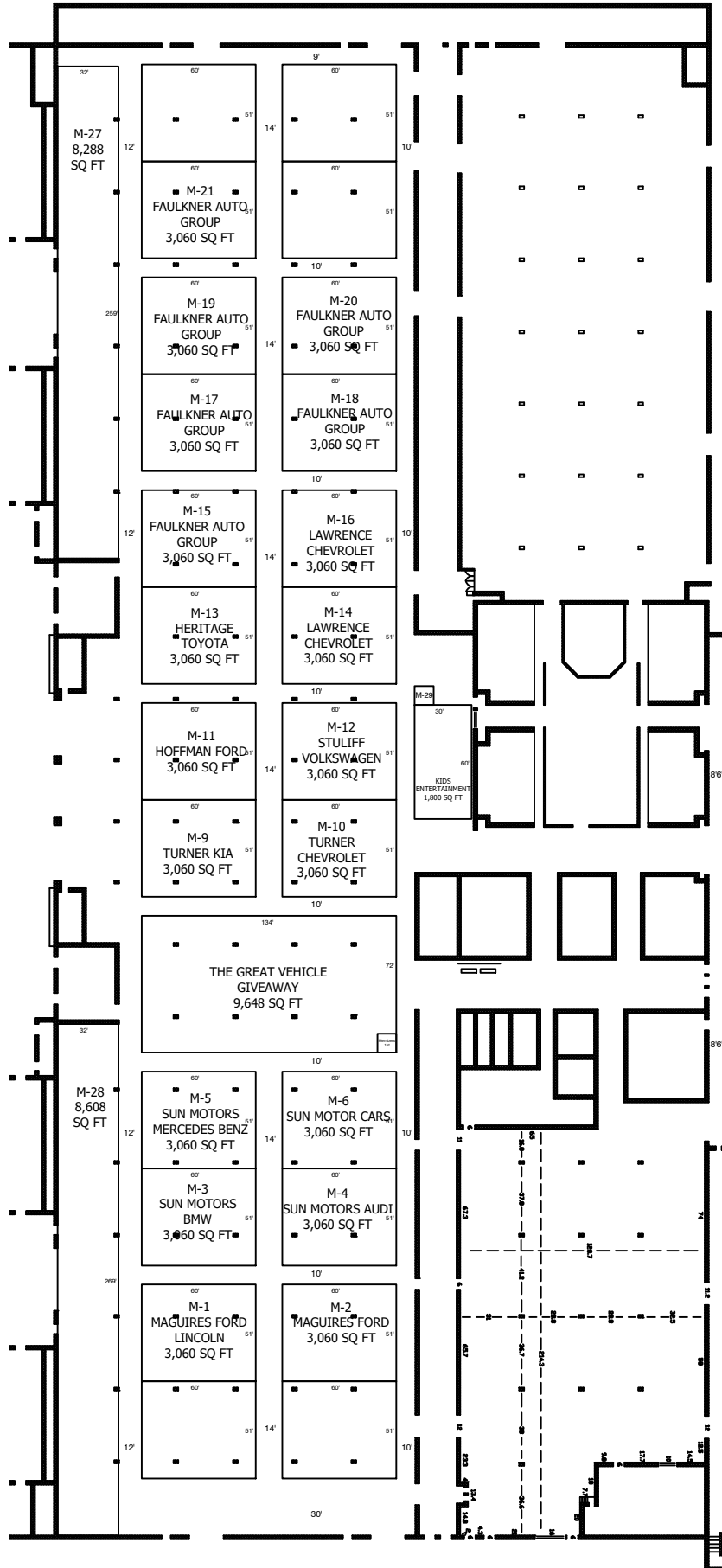
10' 40'  
N-8  
ALL TRAILS  
2,360 SQ FT  
20'

29 28 10x15' 27 10x15' 26 25 24  
12 22.5 7.5 34.5 4.5 15  
GATE 47 thru NE HALL

# NORTHWEST HALL



MAIN HALL



Produced By:



www.generalexposition.com  
 610-495-8866 Phone  
 11.12.24 C. McKerrick

Please note: Every effort has been made to ensure the accuracy of all the information contained on the floorplan. However, no warranties are made with respect to this floorplan. If the location of building columns, utilities or other architectural components of the building is a factor in the construction or usage of an exhibit. It is the sole responsibility of the exhibitor to physically inspect the facility to verify all dimensions and locations.